



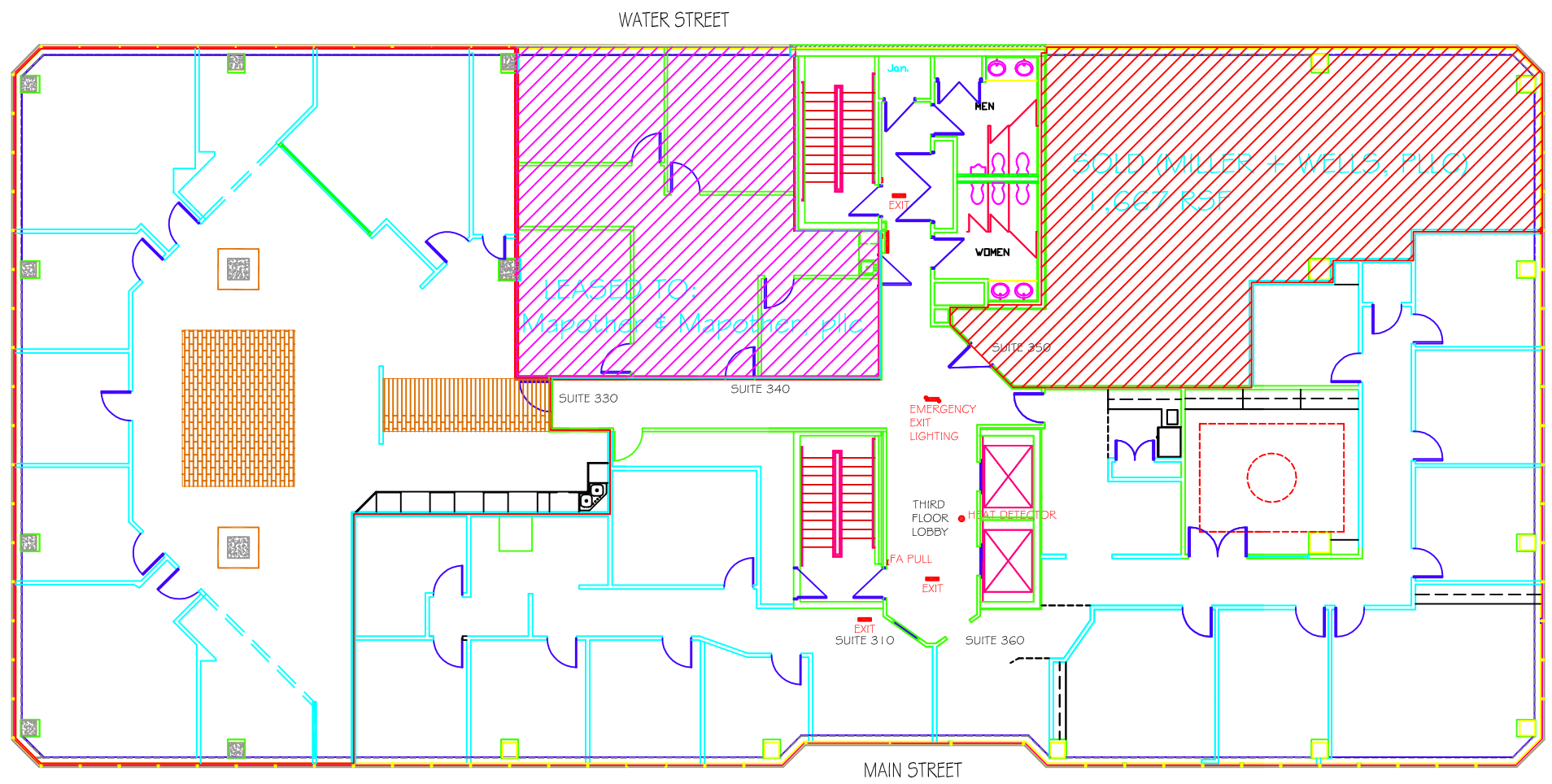
HARMAN CONSTRUCTION
MANAGEMENT, LLC
3470 BLAZER PARKWAY
LEXINGTON, KY 40509-1810

300 EAST MAIN STREET OFFICE BUILDING
3RD FLOOR LAYOUT
EXISTING FLOOR PLAN LAYOUT

DRAWN: RG
CHECKED: RG
DATE: 03.29.07
JOB NO: 300EAST

REVISIONS:

A-1



A EXISTING FLOOR PLAN
SCALE = 1/16" = 1'-0"

SUITE 310: BILL KARUTZ, ATTORNEY AT LAW
SUITE 320-330: MATT & PAIGE GOOD, COLDWELL BANKER RE
SUITE 340: LEASED TO MAPOTHER & MAPOTHER, PLLC
SUITE 350-360: MILLER + WELLS, PLLC

